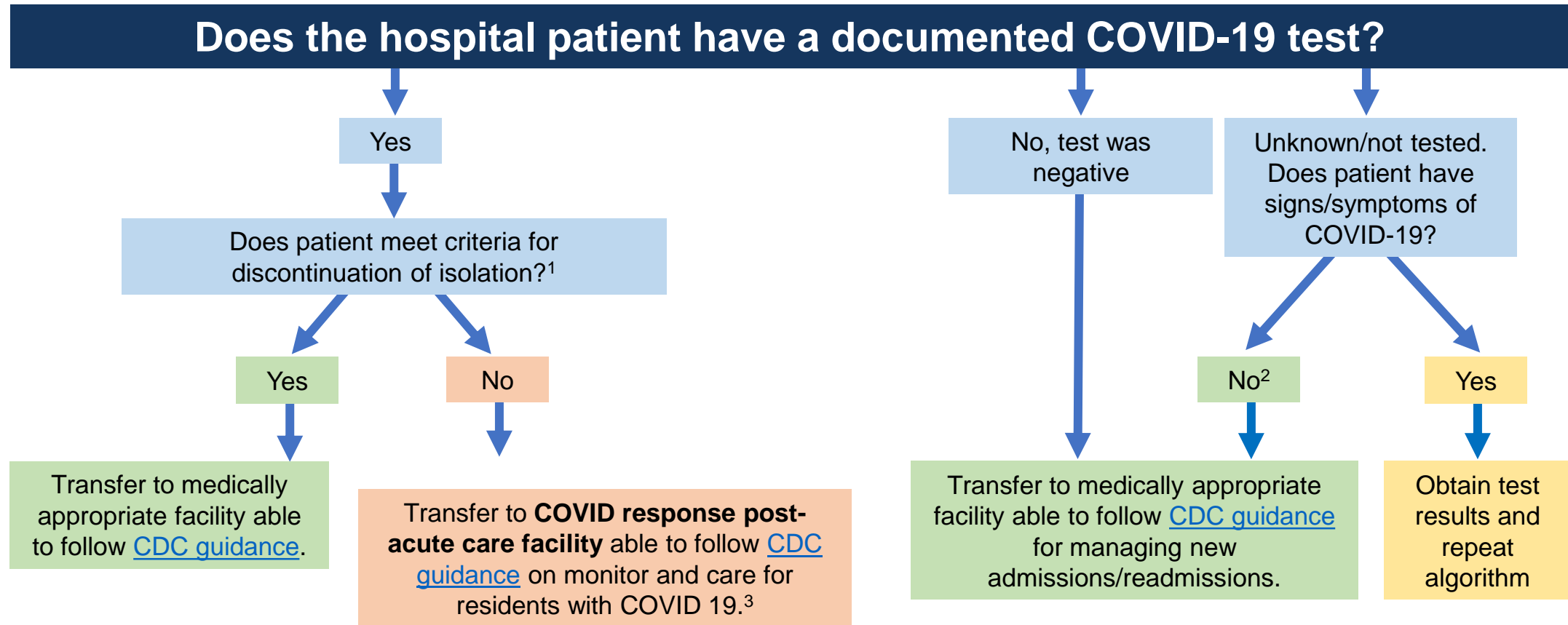


Flow Diagram for Hospitalized Patients Being Discharged to a Long-term Care Facility



- 1. Criteria for discontinuation of isolation for patients being discharged to long term care facility:** Resolution of fever without the use of fever-reducing medications **and** Improvement in respiratory symptoms (e.g., cough, shortness of breath), **and** Negative results from at least two consecutive nasopharyngeal swab specimens collected ≥ 24 hours apart.
- 2.** CMS states testing can be considered if available. Testing should be considered in non-surge scenarios and when test results can be obtained in 24-48 hours. Since the ability to detect transmission is limited during the incubation phase, a negative test does not rule out COVID-19 and patients should still be placed on 14-day transmission precautions when transferred to long-term care. Long-term care facilities **should NOT require two tests** – two tests are only indicated to document resolution of symptoms after known COVID-19 diagnosis.
- 3.** A list of facilities will be shared with hospital discharge planners. These facilities are offered as options and do not restrict transfer elsewhere. Check with facility to determine if patients requiring aerosolizing procedures, e.g. nebulizer treatment, are appropriate for transfer.