

Covid-19 Hospital and ED Surveillance

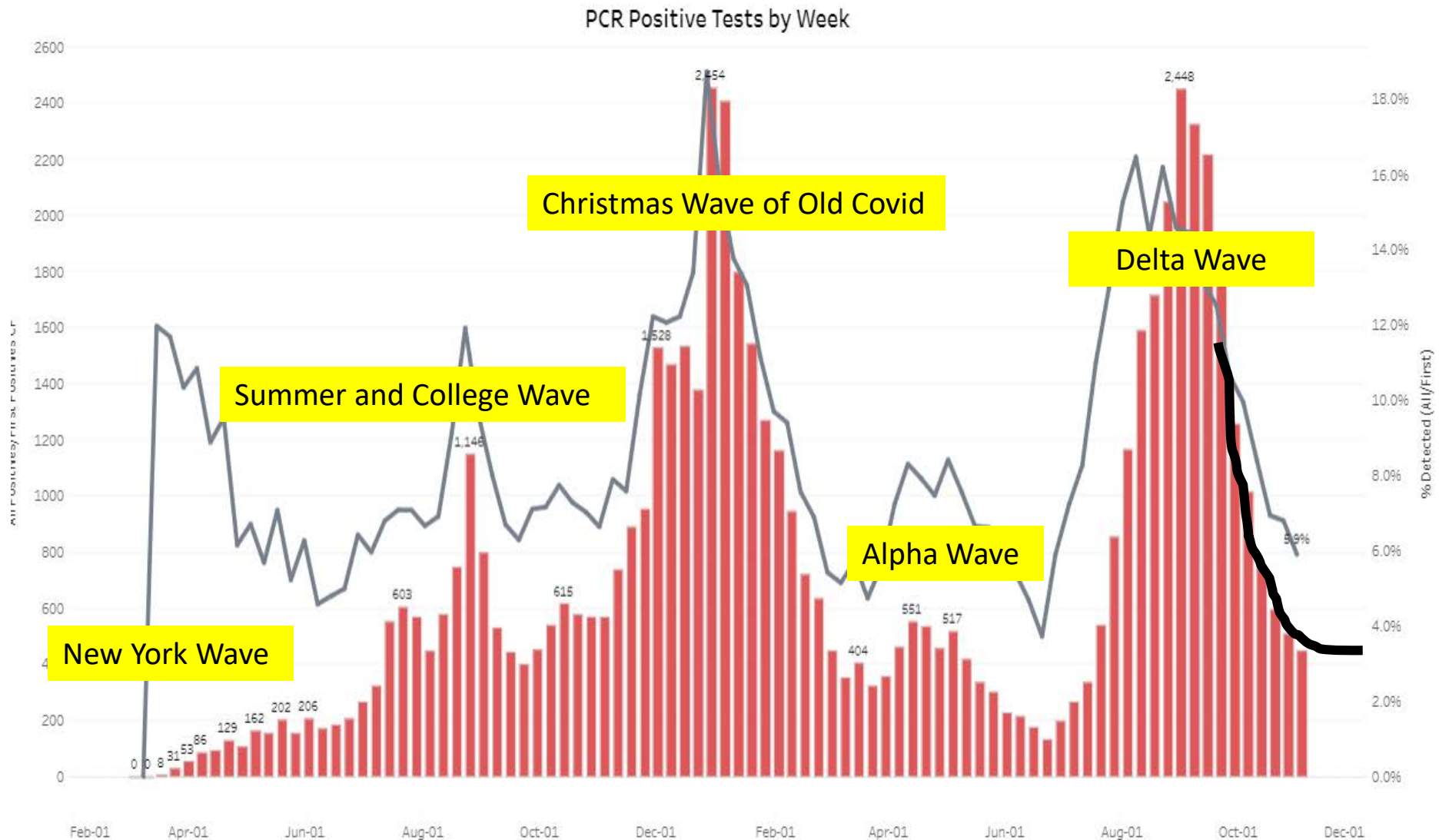
November 10, 2021

Bill Cleve



VIDANT HEALTH™

VH Weekly Number of Positive Covid Tests

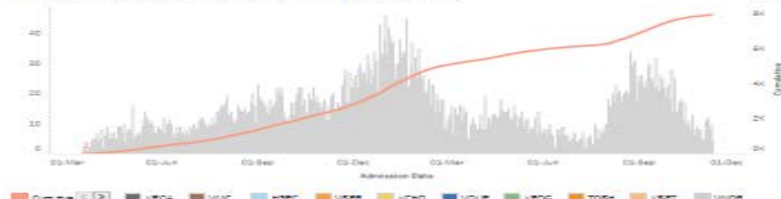


COVID-19 Data Treasure Pot

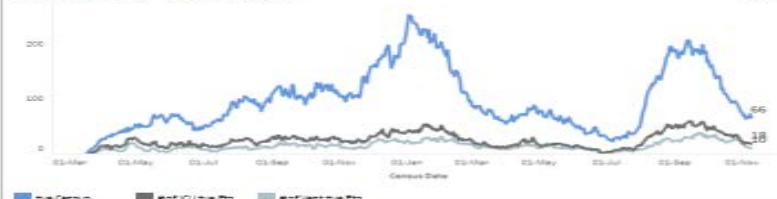
Reporting Period from 03/10/2020 to 11/09/2021

Admissions		Unique Pts		Inhouse Pts		ICU Pts		Vent Pts	
4	7,951	6,932	66 (30 COVID cleared)	18	10				
on Nov-09	Total								

Hospital Admissions: Total and by Hospital



Daily Census - IP, ICU, Vent



Hospital:

IP Time Period:

Census Date:

Admission Date:

Discharge Date:

Age Group:

Pt Country:

Pt City:

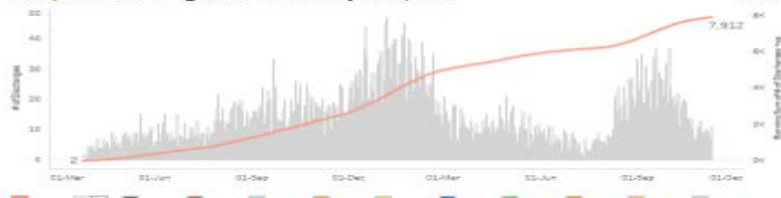
Pt State:

Pt Gender:

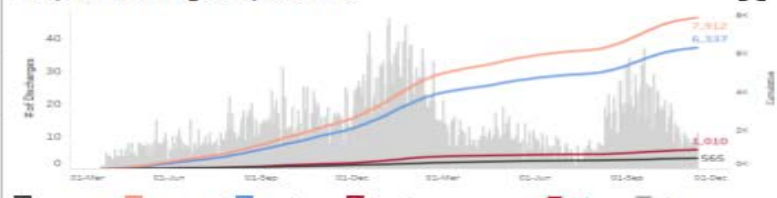
Pt Race:

Discharges		Unique Pts		D/C Alive		D/C Xfer		IP Deaths		IP ALOS	
11	7,885	6,872	11	6,321	0	565	0	1,010	7.2		
on Nov-09	Total		on Nov-09	Total	on Nov-09	Total	on Nov-09	Total			

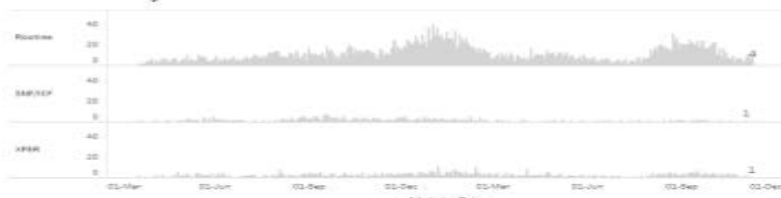
Hospital Discharges: Total and by Hospital



Hospital Discharge Dispositions



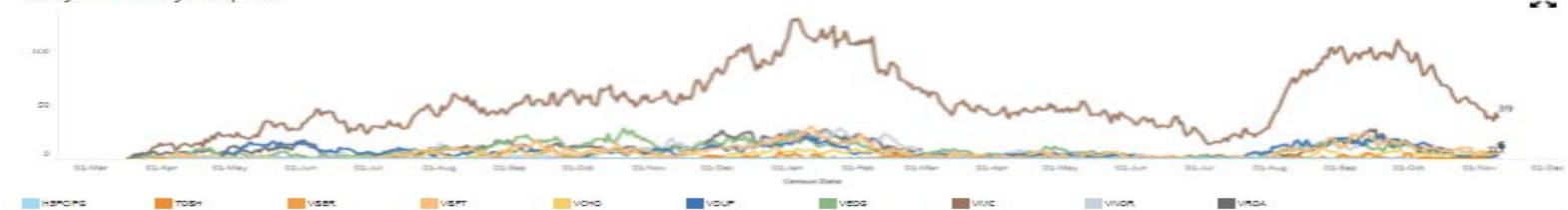
Admissions by Admit Source



Discharges by Weekly Avg Length Of Stay (IP, ICU and Vent)

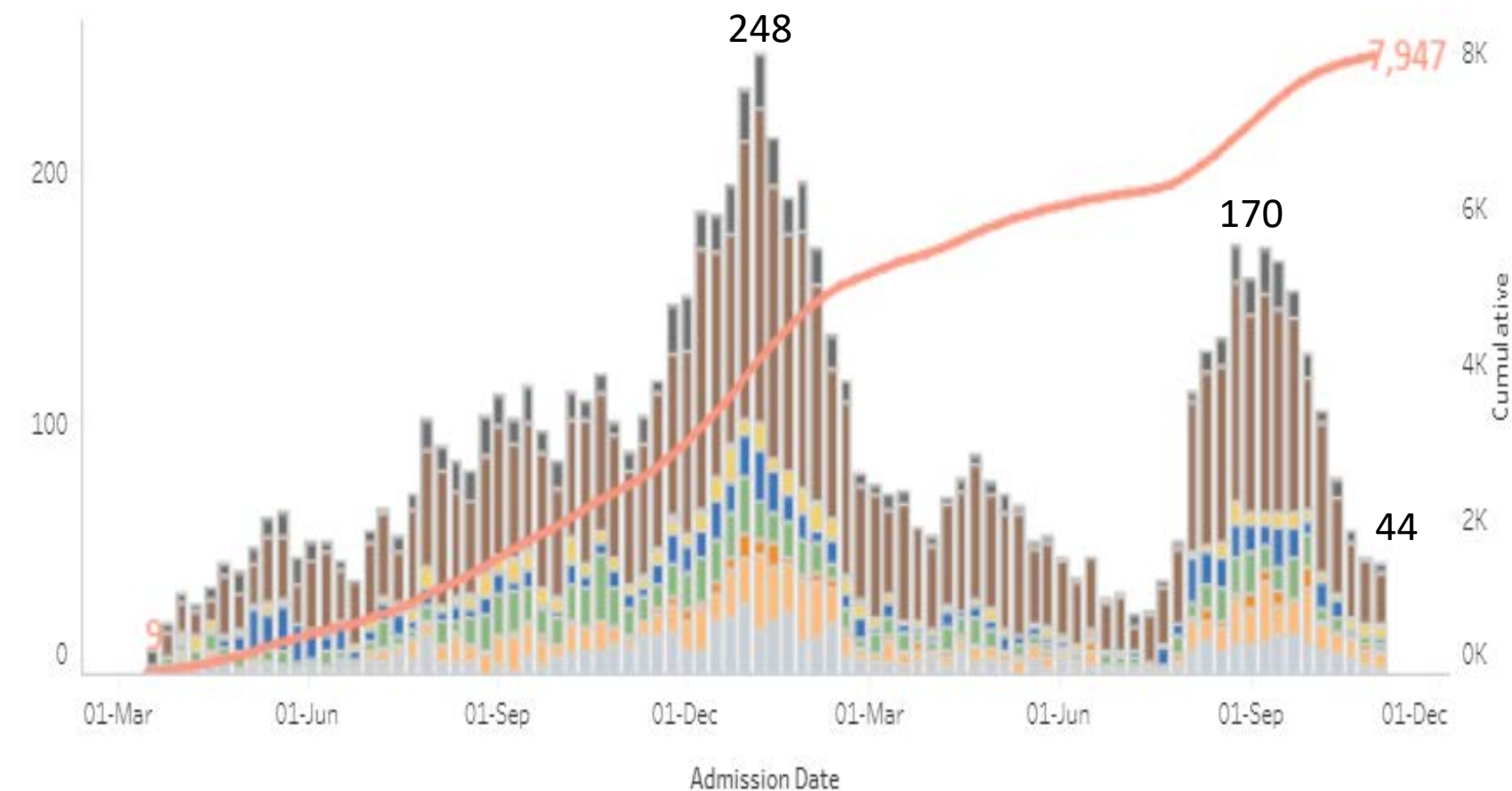


Daily Census By Hospital



VH Weekly Number of COVID Admissions

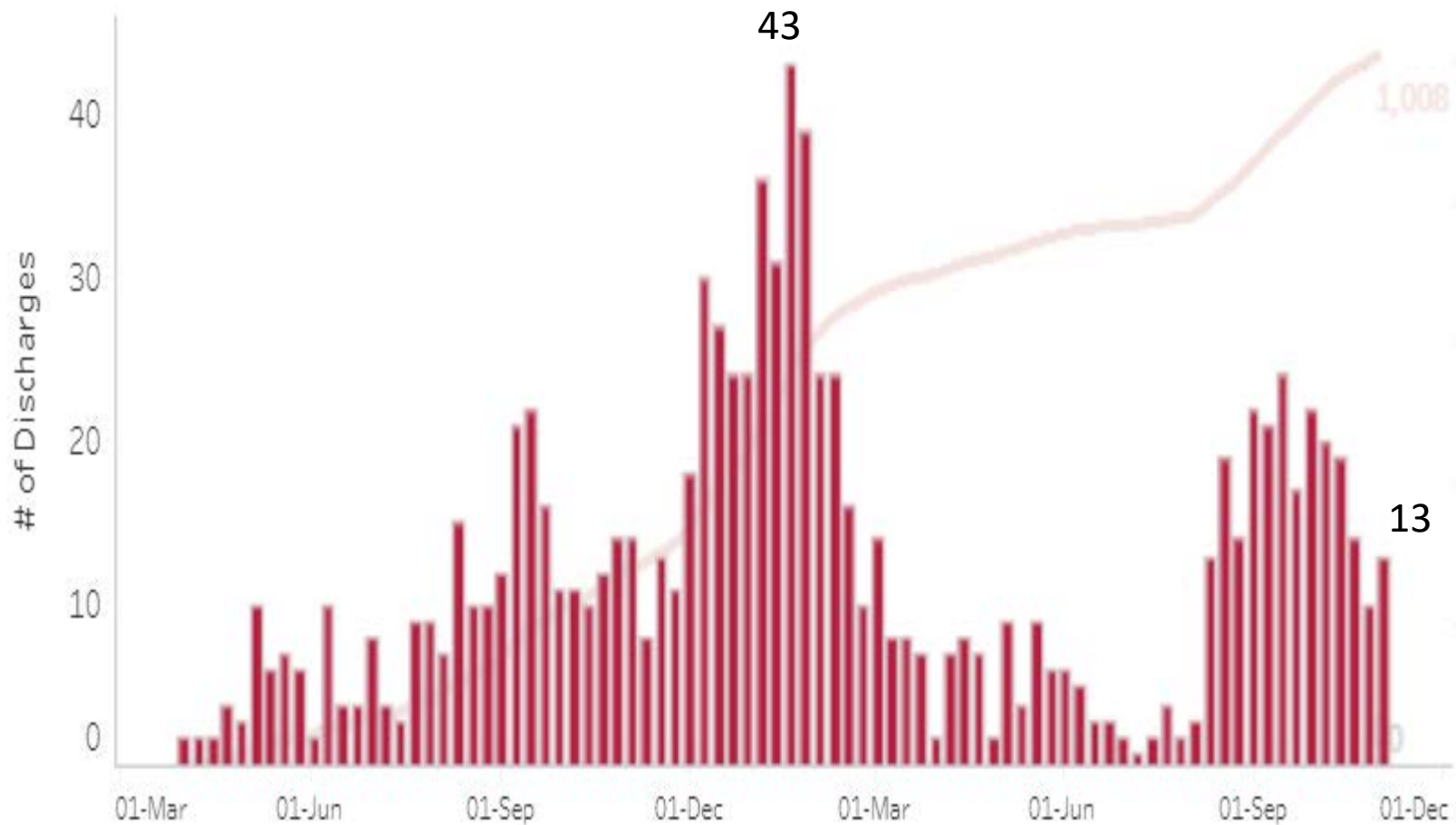
Hospital Admissions: Total and by Hospital



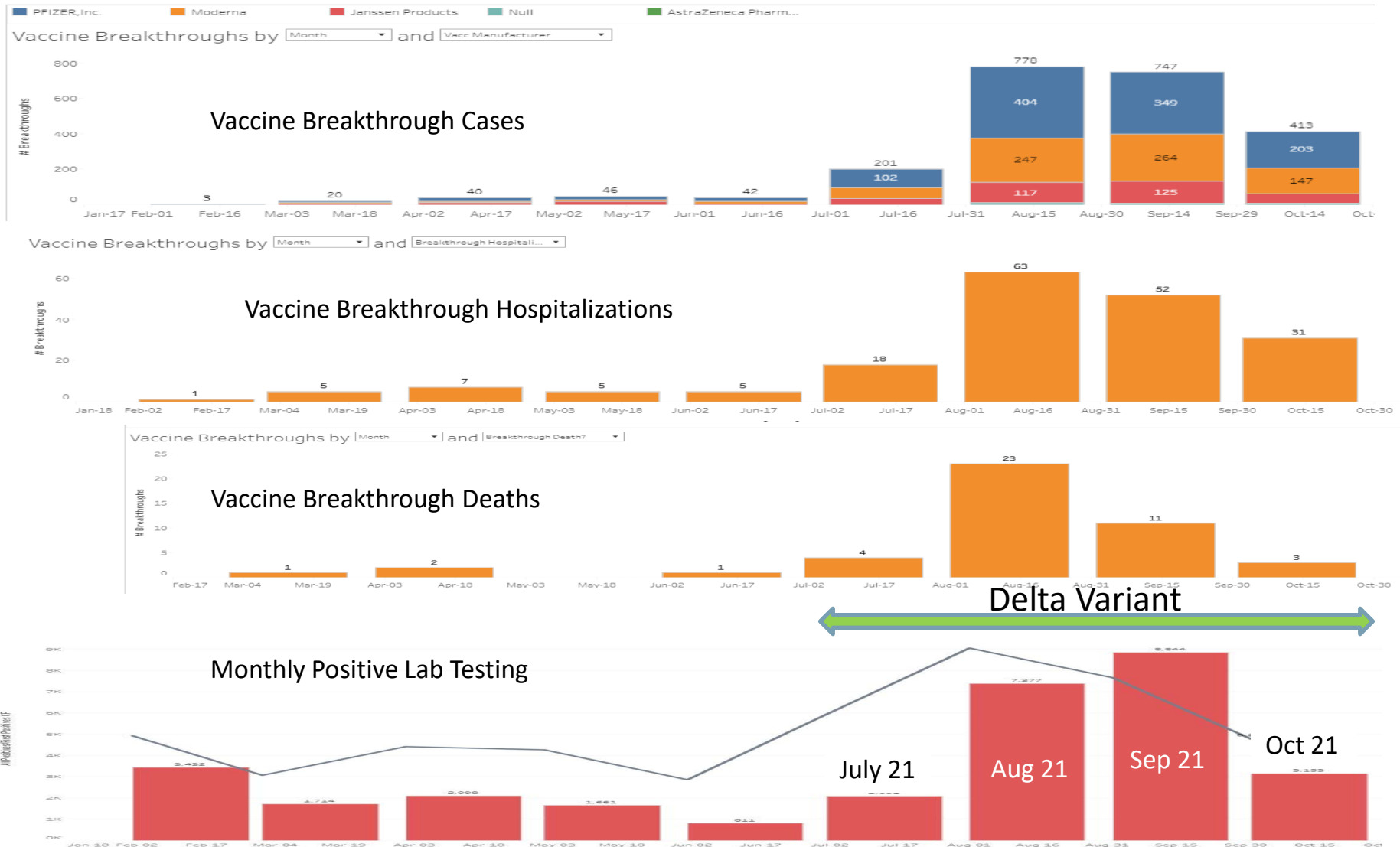
VH Weekly Deaths

1010 total

Hospital Discharge Dispositions



Delta takes a bite out of the Vaccinated



Vaccine Saving Lives

Confirmed COVID-19 Cases and Deaths among Residents and Rate per 1,000 Resident-Weeks in Nursing Homes, by Week - United States

CDC's National Healthcare Safety Network (NHSN) is supporting the nation's COVID-19 response by providing a [Long-term Care Facilities \(LTCFs\) COVID-19 Module](#), which enables an assessment of the impact of COVID-19 through facility reported information, including: counts of residents and facility personnel (staff) with positive COVID-19 viral test results and death counts among residents and facility personnel with positive COVID-19 viral test results. Read more about the data at: [Nursing Home Covid-19 Data Dashboard](#)



COVID-19 Deaths among Residents and Rate per 1,000 Resident-Weeks in Nursing Homes, by Week—United States

Data as of 11/1/2021
5:30 AM



Resident Cases

Resident Deaths

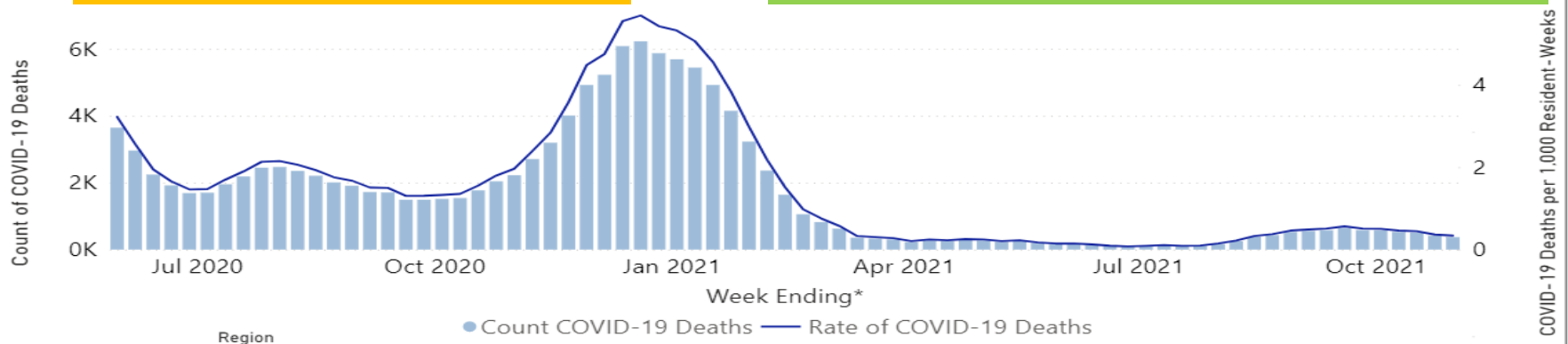
Display by State

All

Unvaccinated

Display by FEMA/US Region

Vaccinated



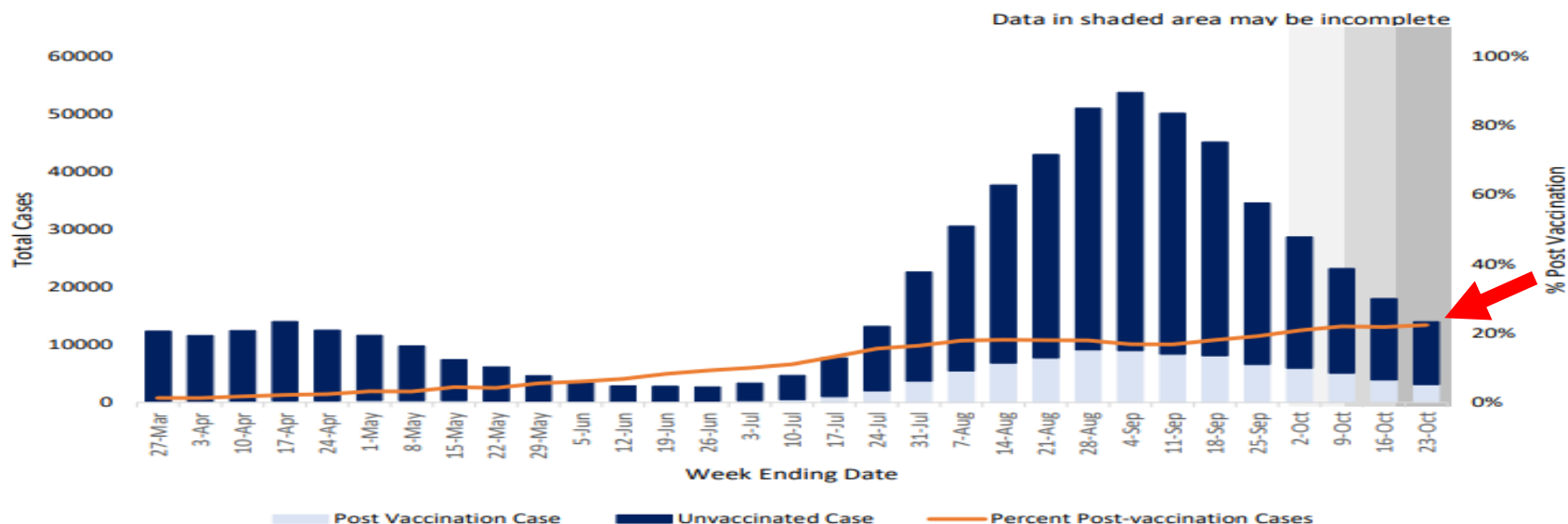
COVID-19 Cases Vax vs UnVax'ed

RESPIRATORY DISEASE SURVEILLANCE 2021-2022

POST-VACCINATION CASE SURVEILLANCE

Cases identified in North Carolina among unvaccinated and vaccinated people during January 1, 2021 — October 23, 2021

For the week ending October 23, 2021 there were 5,427,364 North Carolinians vaccinated against COVID-19 and 91,047 cases in fully vaccinated individuals since January 1, 2021.



Post-vaccination cases made up **22%** of COVID-19 cases in North Carolina the week ending October 23, 2021. The percent of post-vaccination cases **DID NOT CHANGE** the week ending October 23, 2021 compared to the previous week.

Worldwide COVID-19 Cases

Americas

94,357,477

confirmed



Europe

78,989,789

confirmed



South-East Asia

44,140,455

confirmed



Eastern Mediterranean

16,476,343

confirmed



Western Pacific

9,605,809

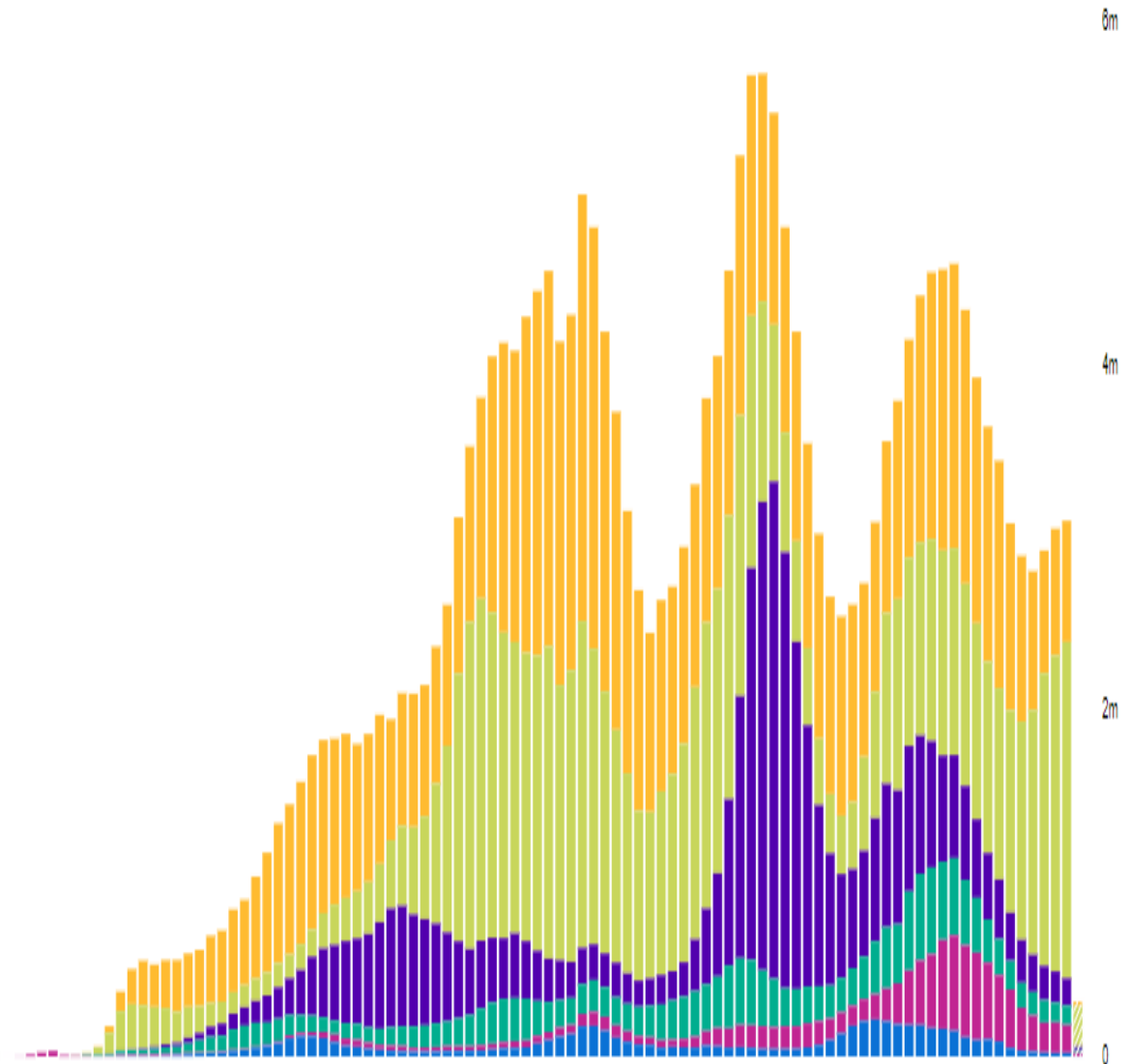
confirmed



Africa

6,172,791

confirmed



Covid-19 Cases Epi Curves



VIDANT HEALTH™

United States of America

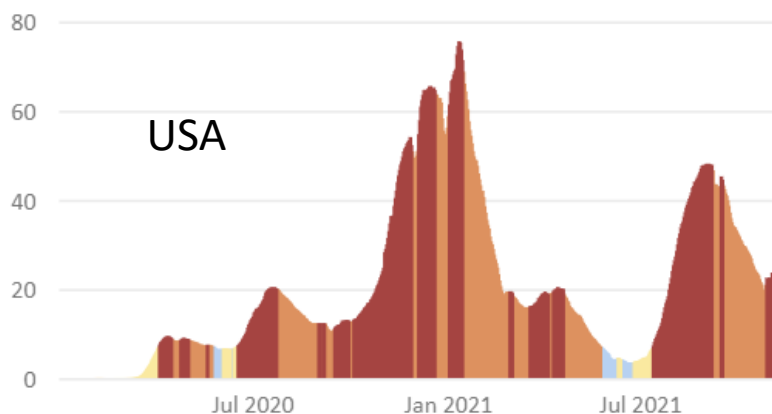
Cases per 100,000
reported in the past 7 days

Percent Change
in weekly cases

Substantial/High Incidence, Decreasing

152.5

-3.3



The United Kingdom

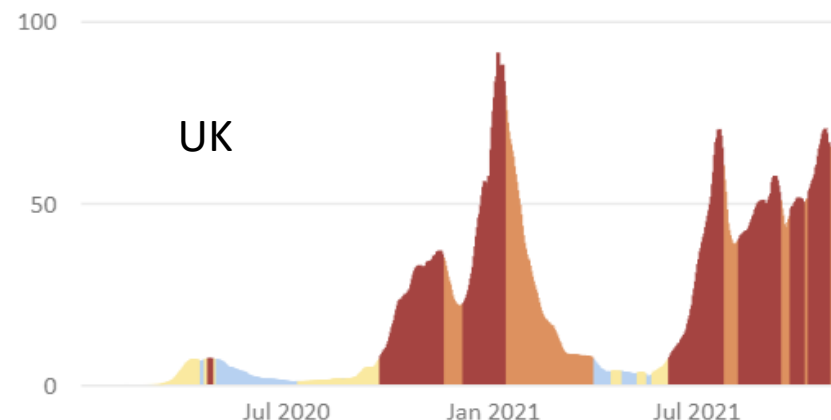
Cases per 100,000
reported in the past 7 days

Percent Change
in weekly cases

Substantial/High Incidence, Decreasing

375.8

-11.6



Israel

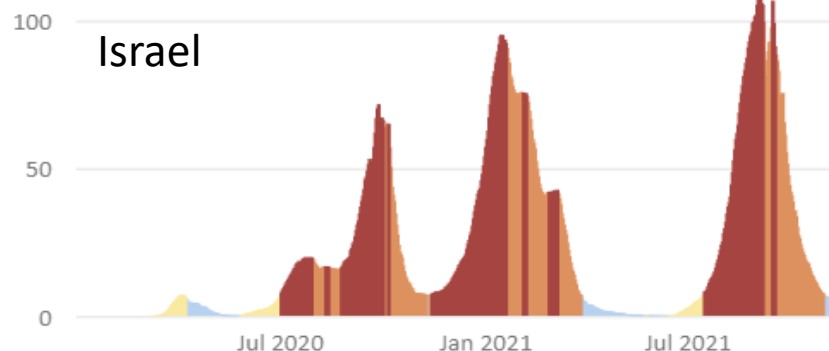
Cases per 100,000
reported in the past 7 days

Percent Change
in weekly cases

Low/Moderate Incidence, Decreasing

36.5

-31.0



Russian Federation

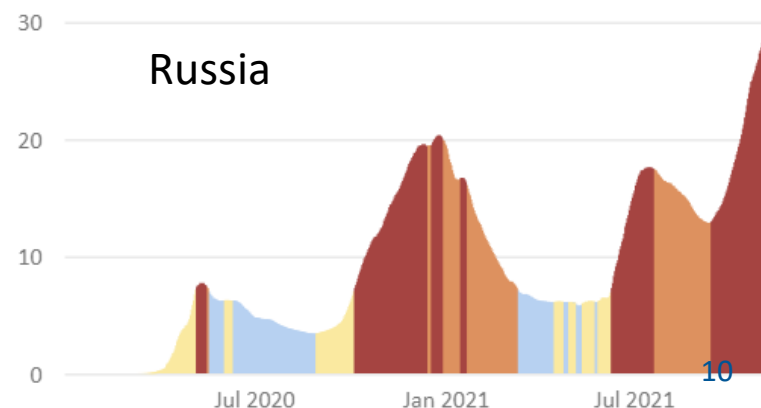
Cases per 100,000
reported in the past 7 days

Percent Change
in weekly cases

Substantial/High Incidence, Increasing

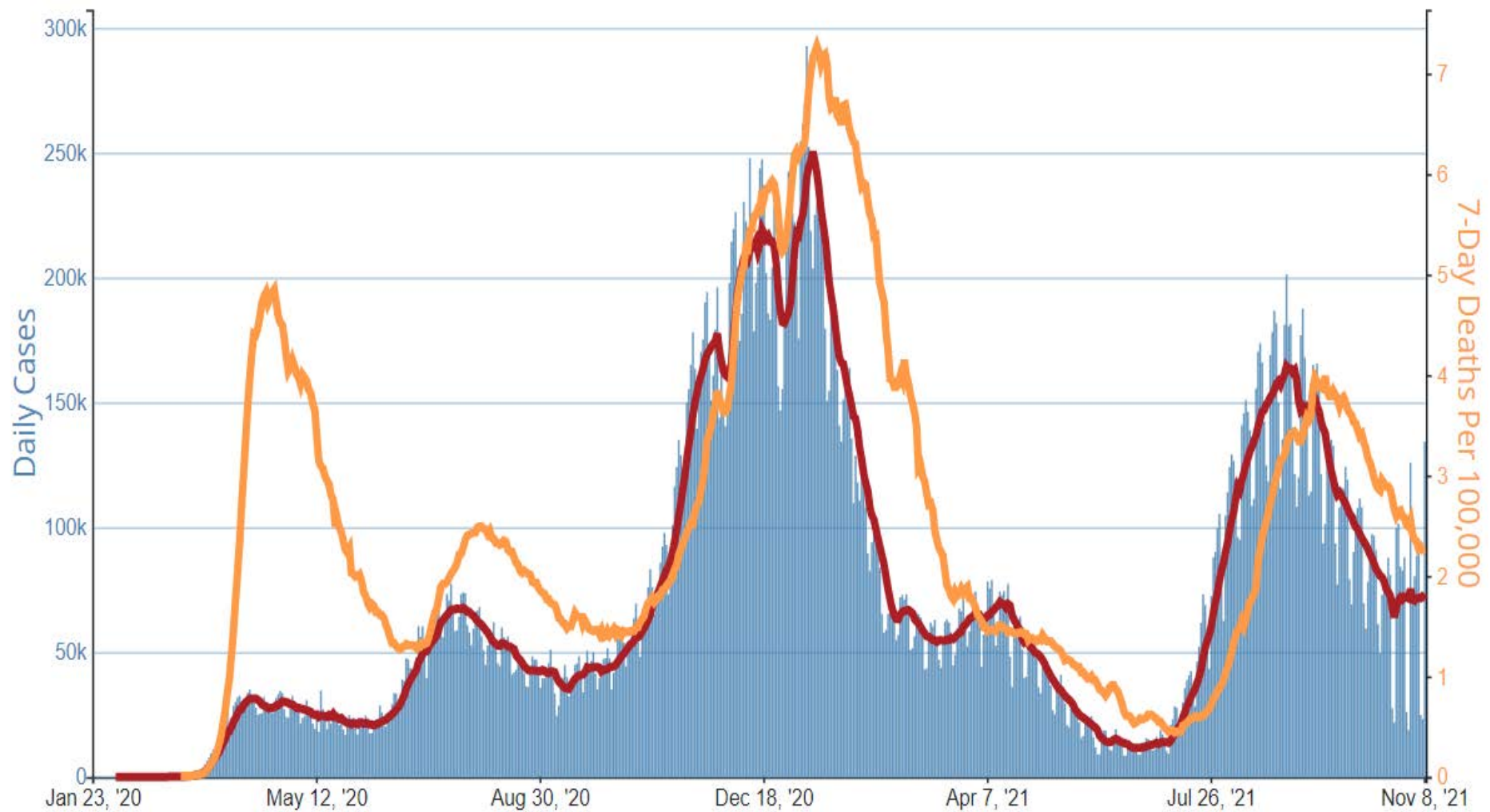
197.7

3.4



US Covid-19 Cases and Deaths

Daily Trends in Number of Cases and 7-Day Cumulative Incidence Rate of COVID-19 Deaths in The United States Reported to CDC, per 100,000 population.

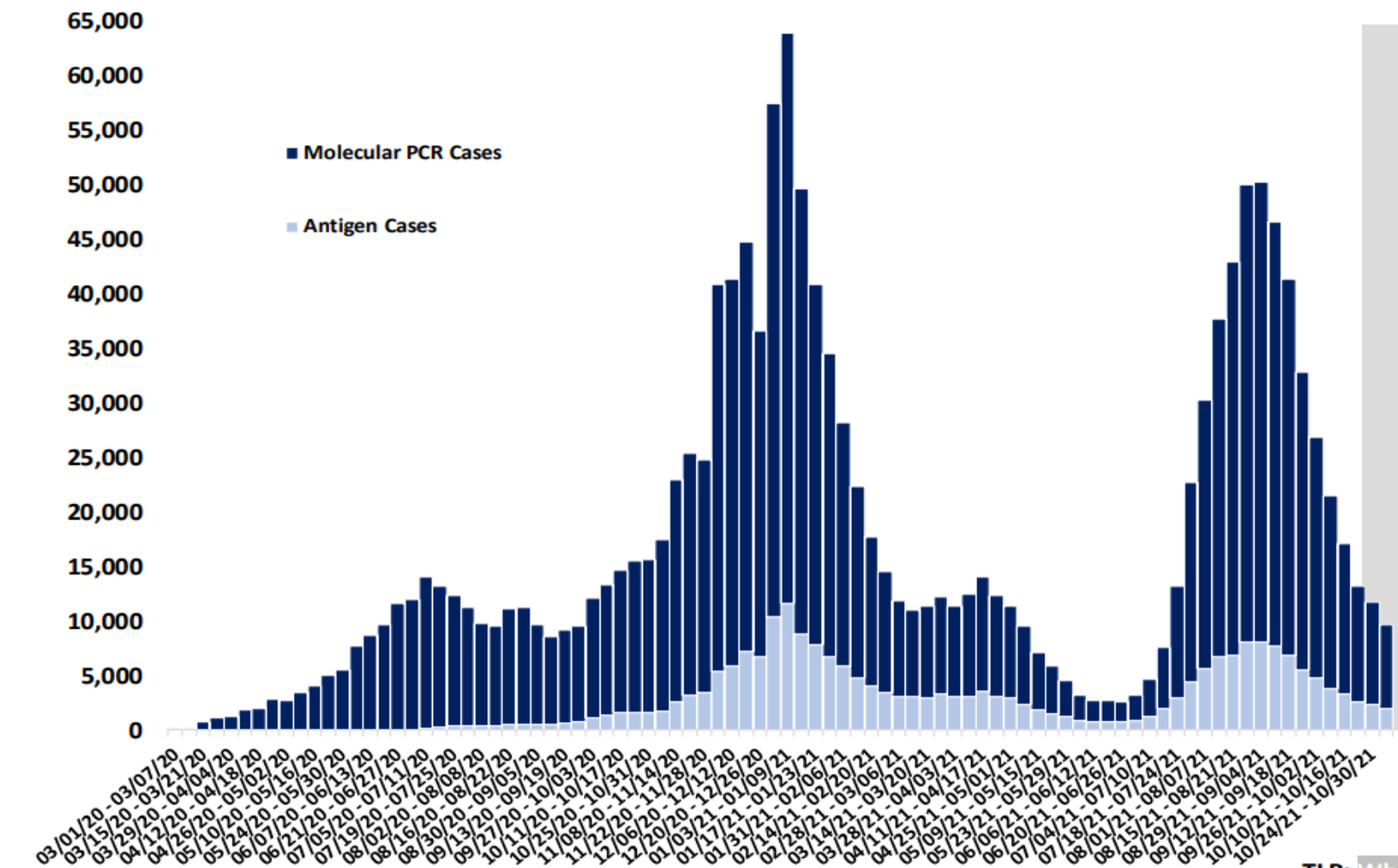


North Carolina COVID-19 Cases



VIDANT HEALTH™

Total COVID-19 cases by week of specimen collection

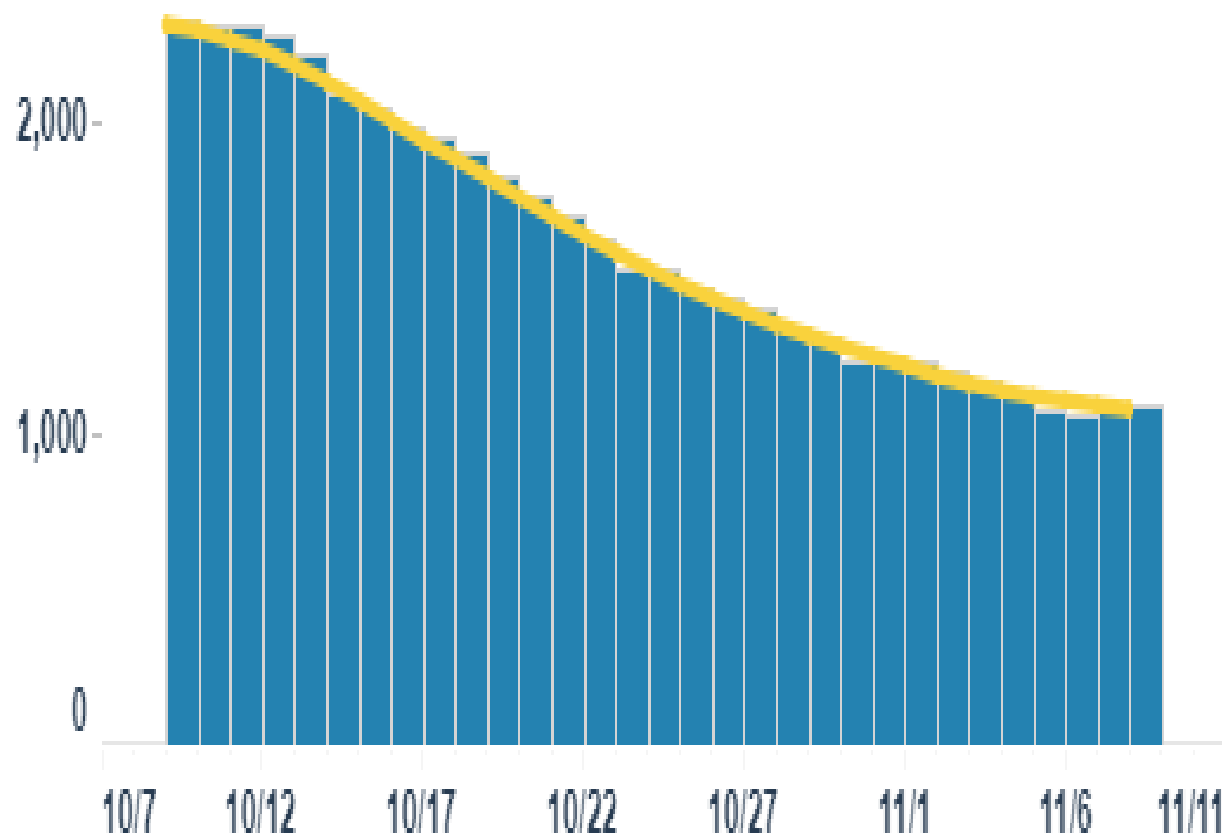


Date of specimen collection is missing for 63 patients. Total cases includes both molecular PCR and antigen positive cases.

TLP: White

North Carolina Hospitalizations

Peak Jan. 14 at 3990



**CURRENTLY
HOSPITALIZED**

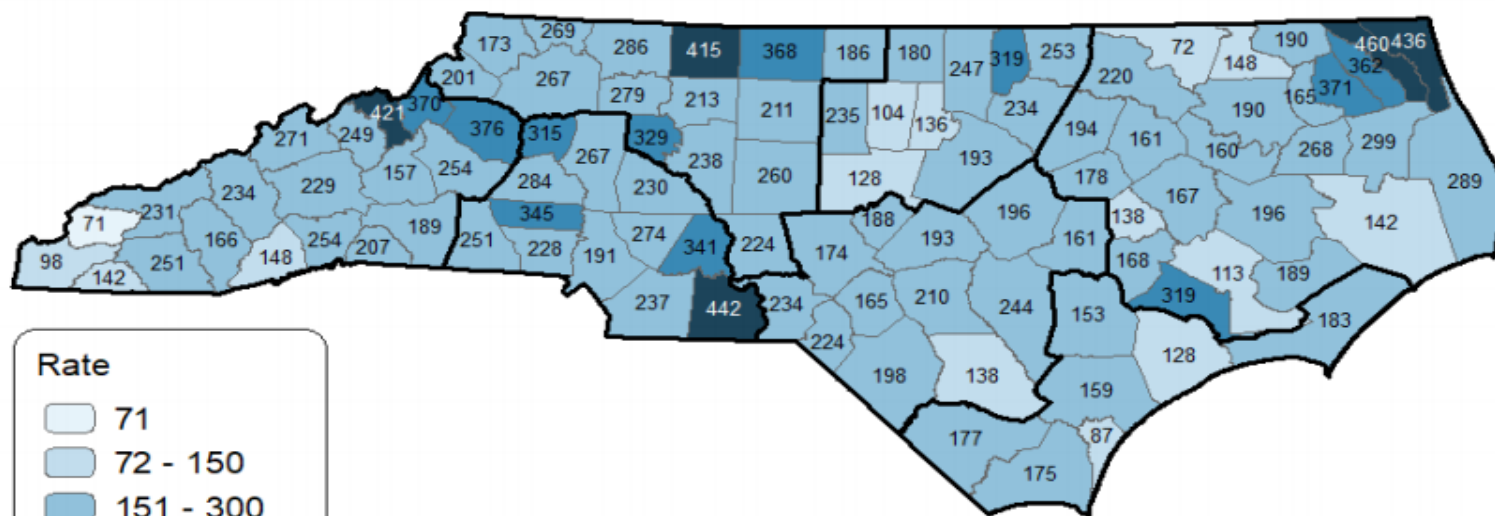
1,097

North Carolina County Rates



VIDANT HEALTH™

North Carolina
Number of New COVID-19 Total Cases*
per 100,000 Persons by County of Residence
Past 14 Days: Oct 26 - Nov 8



Rate

- 71
- 72 - 150
- 151 - 300
- 301 - 400
- 401+

Flu Regions

Note: 1 Case Missing

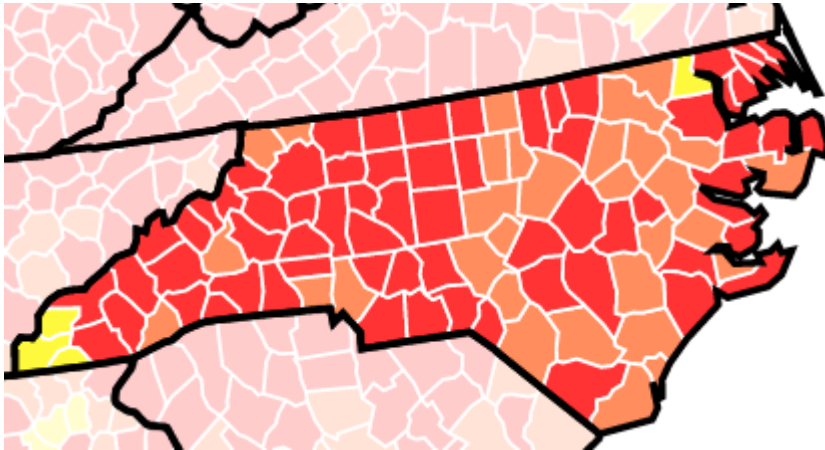
*Includes molecular PCR and antigen positive cases

State Center for Health Statistics




DEPARTMENT OF
HEALTH AND HUMAN SERVICES

Community Transmission Levels



Pitt County, North Carolina

[State Health Department](#) 

7-day Metrics | [7-day Percent Change](#)

Community Transmission

● Substantial

Everyone in **Pitt County, North Carolina** should wear a mask in public, indoor settings. Mask requirements might vary from place to place. Make sure you follow local laws, rules, regulations or guidance.

[How is community transmission calculated?](#)

November 8, 2021

Cases	165
Case Rate per 100k	91.29
% Positivity	4.46%
Deaths	0
% of population ≥ 12 years of age fully vaccinated	55.5%
New Hospital Admissions	11

Indicator - If the two indicators suggest different transmission levels, the higher level is selected	Low Transmission Blue	Moderate Transmission Yellow	Substantial Transmission Orange	High Transmission Red
Total new cases per 100,000 persons in the past 7 days	0-9.99	10-49.99	50-99.99	≥ 100
Percentage of NAATs ¹ that are positive during the past 7 days	0-4.99%	5-7.99%	8-9.99%	≥ 10.0%